

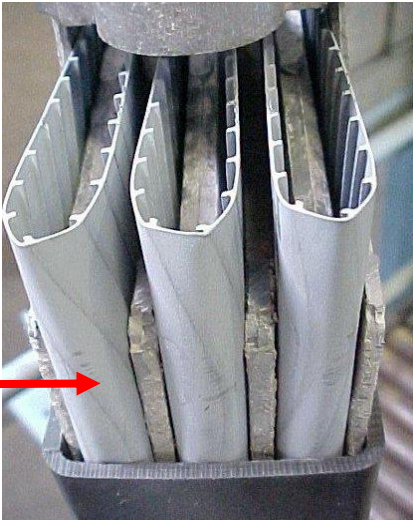
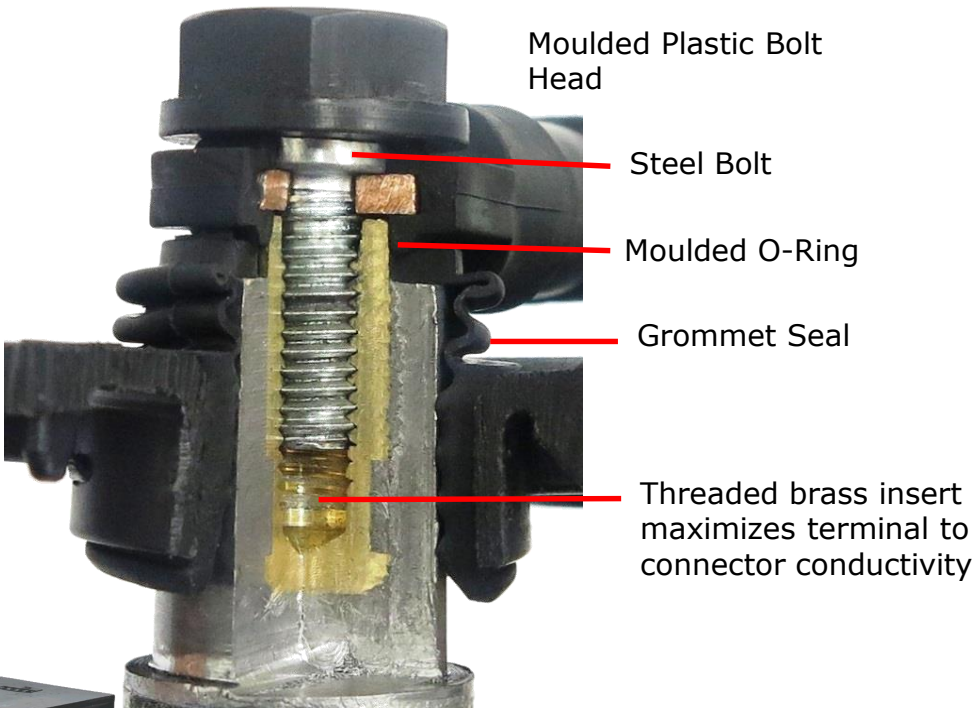
# FLOODED RAILWAY BATTERIES



# Battery Specifications

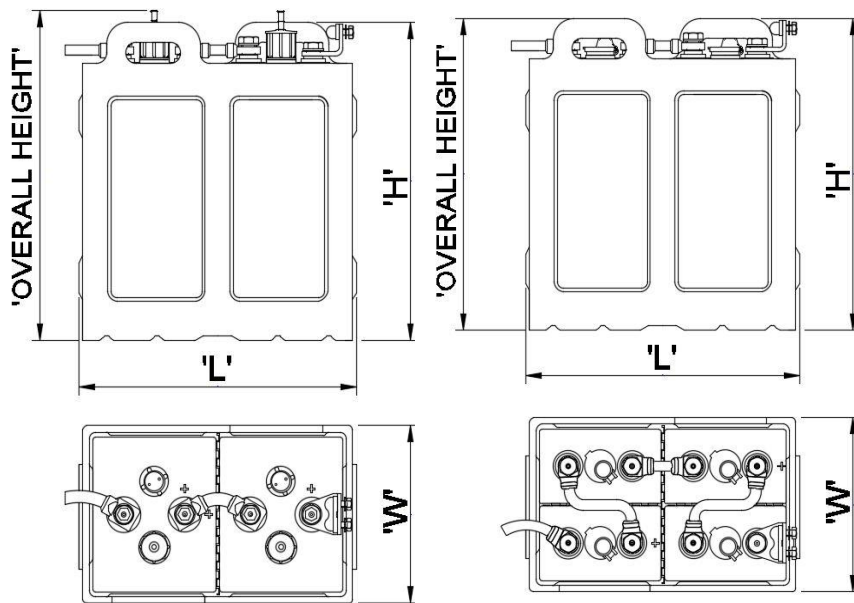
Type	Voltage	Starting Current (A) *	Capacity @ 30°C (Ah)							Wet Wt. (kg) ± 5%	External dimensions of Container (mm)			Overall Height of Block (mm)
			10 hour	8 hour	5 hour	3 hour	1 hour	10 min	5 min		Length (mm) “L”	Width (mm) “W”	Height (mm) “H”	
Diesel Starting Batteries														
4MIL15DS	8	849	-	395	375	360	315	-	-	115	715	180	420	470
4MIL25DS	8	1456	-	680	650	625	550	-	-	185	715	280	425	470
4 DS 280	8	587	-	280	270	230	195	120	100	90	700	172	390	445
4 DS 390	8	760	-	375	360	340	305	-	-	110	700	172	390	445
Train Lighting Batteries														
4 BIMF 9TL	8	-	170	165	160	150	135	-	-	55	355	220	390	390
2 BIMF23TL	4	-	475	460	440	420	370	-	-	64	355	220	390	405

\* -18°C, 3 minutes to an end voltage of 1.0V/cell

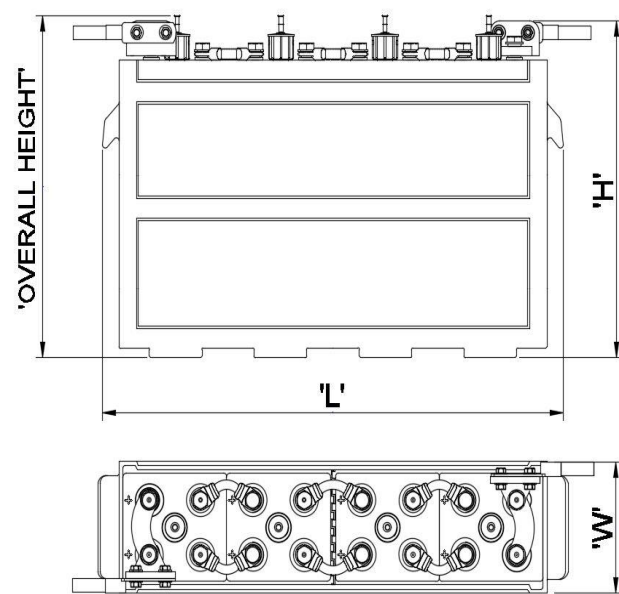




## Train Lighting Batteries



## Diesel Starting Batteries



Individual cells in rugged casing to improve shock resistance and to facilitate easy cell change out if required.

Positive plate is of tubular construction using low antimony alloys thus reducing topping up frequency.

Negative plate is of a highly porous paste on an alloy grid. This compliments the positive plate construction providing a balanced performance and superior life.

All positive plates are automatically sleeved (the separator is wrapped around the plate). Sleeves replace individual separators with the following benefits:

- No missing separators.
- Ensures alignment of plates and separators.
- Eliminates the possibility of shorts circuits and mousing.
- Extended life.

The mud trap prevents possible short circuits between plates due to active material shedding during the life of the cell.

The lid is heat sealed to the container ensuring a homogenous bond which is vital to mechanical strength and safety.

Connectors:

- Made of thermoplastic rubber.
- Acid, abrasion and fatigue resistant.
- Access for easy voltage checking.
- More flexible than PVC cable.
- Exceptional moulding bond eliminates contamination.
- Built in "o" rings.
- Easy and simple to connect.

**Corner Liverpool & Bristol Roads,  
Benoni South, 1502  
P.O. Box 5015 Benoni South, 1502  
South Africa  
Telephone: +27 11 741 3600  
Fax: +27 11 421 2642**



In the interests of continuing advancement we reserve the right to modify specifications without prior notice.  
Copyright subsists in this work. Any unauthorised reproduction, adaption and copying of this document are acts of copyright infringements and entitles First National Battery to take action.

**SANS IEC 60254-1,2: 1997**

**For More Information Contact:  
FIRST NATIONAL BATTERY  
TOLL FREE: 0800 112600  
[www.battery.co.za](http://www.battery.co.za)**



**Standby Railway: October 2019**