



With AGM Technology

EXIDE™

ENDURO



AGM Technology



Conventional

Advanced AGM Technology immobilises the acid in the battery, resulting in virtually zero gas emissions and no acid spillage in the case of rupture or accident. This makes the battery **spillproof** and allows you to install this battery in virtually any position.

Advanced AGM Technology delivers an extra high starting current which makes this battery very suitable for use in **diesel vehicles**. Diesel engines have a very high compression ratio which requires **high starting currents**.

Advanced AGM Technology uses a tightly compressed internal construction which makes this battery more **vibration resistant**. Potholes and rough terrain are less likely to systematically damage the plates of this battery and shorten the life.

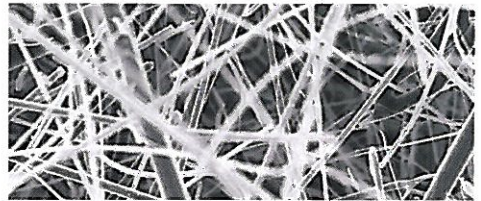
Advanced AGM Technology is especially suitable for **deep cycle applications**. Designed to withstand ongoing discharging and recharging and offers up to **3 times the deepcycle life** of a conventional (flooded) technology battery.

Vehicle manufacturers are now selling more and more vehicle with **stop/start capabilities**. Advanced AGM batteries are optimised for stop/start and regenerative braking used in mild hybrid vehicles. To be

more fuel efficient the engines of these stop/start vehicles switch off automatically every time the vehicle stops in traffic. When the clutch is depressed the engine automatically restarts. This represents the most challenging operating environment for a vehicle battery.

Advanced AGM Technology is specially designed for this new generation of vehicles and will play a major role to ensure a reliable **greener environment** for all of us. This battery is also **recyclable** when it has finally reached the end of its **long life**. Advanced AGM batteries last longer and therefore require less frequent replacement - saving energy, resources and accompanying emissions during manufacture.

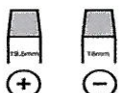
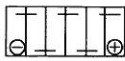
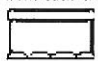
This battery has a nationwide guarantee and is available in the launch range of three battery capacities - **70, 80 and 92 Ah** which will meet virtually all the local market requirements for this unique product.



SEM Glass Matt Separator

BATTERY SPECIFICATIONS

Type	C ₂₀ (Ah)	Reserve Capacity (Min)	EN CCA(A)	Length mm	Width mm	Height mm	Hold down	Terminal	Layout	Wet Weight kg
652AGM	70	120	760	276	175	190	B3	1	0	20.2
668AGM	80	140	800	314	175	190	B3	1	0	22.9
658AGM	92	160	900	352	175	190	B3	1	0	25.8

Terminal 1		Layout 0		Hold down B3	
------------	---	----------	---	--------------	---



AGM TECHNOLOGY



**FIRST
NATIONAL™
BATTERY**

THROUGH CARING WE LEAD

www.battery.co.za Toll free 0800 112 600.

FIRST NATIONAL BATTERY DIVISION OF METINDUSTRIAL (Pty) LTD

Reg. No. 1949/031259/07. Liverpool Road, Industrial Sites

P.O. Box 5015, Benoni South, 1502, South Africa.

Tel: 011 741 3600 Fax: 011 421 2642. marketing@battery.co.za www.battery.co.za